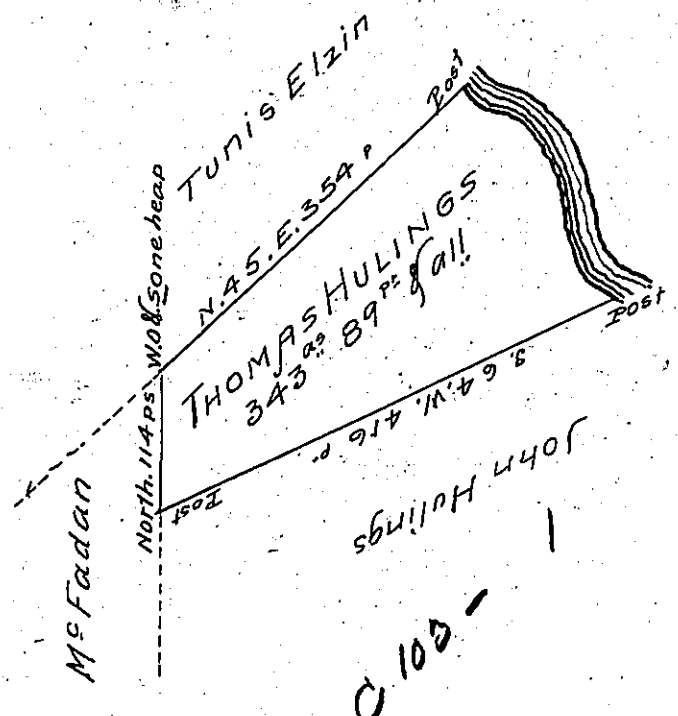


C-37-5-1



River Courses

S 25	E 6	P
S 20	E 6	
S 45 1/4	E 16.2	
S 57 1/2	E 55	
S 32	E 9.4	
S 12 1/4	E 20.5	
South	E 26.6	
S 19	E 11.3	
S 35 1/4	E 64.2	
S 31 1/4	E 16.0	
		<u>231.2 p</u>

Situate on the West side of French Creek in Allegheny County. Containing 343^{as} 89 p and allowance of six per cent for roads &c. Surveyed the 26th day of May 1795 in pursuance of his Improvement bearing date the 3^d day of April 1792.

W^m Power DLS^c

To Dan^l Brodhead Esq^r
Surveyor General

IN TESTIMONY that the above is a copy of the original remaining on file in the Department of Internal Affairs of Pennsylvania, made conformably to an Act of Assembly approved the 16th day of February, 1833, I have hereunto set my Hand and caused the Seal of said Department to be affixed at Harrisburg, this fifteenth day of September 1906.

Isaac R. Brown
Secretary of Internal Affairs.